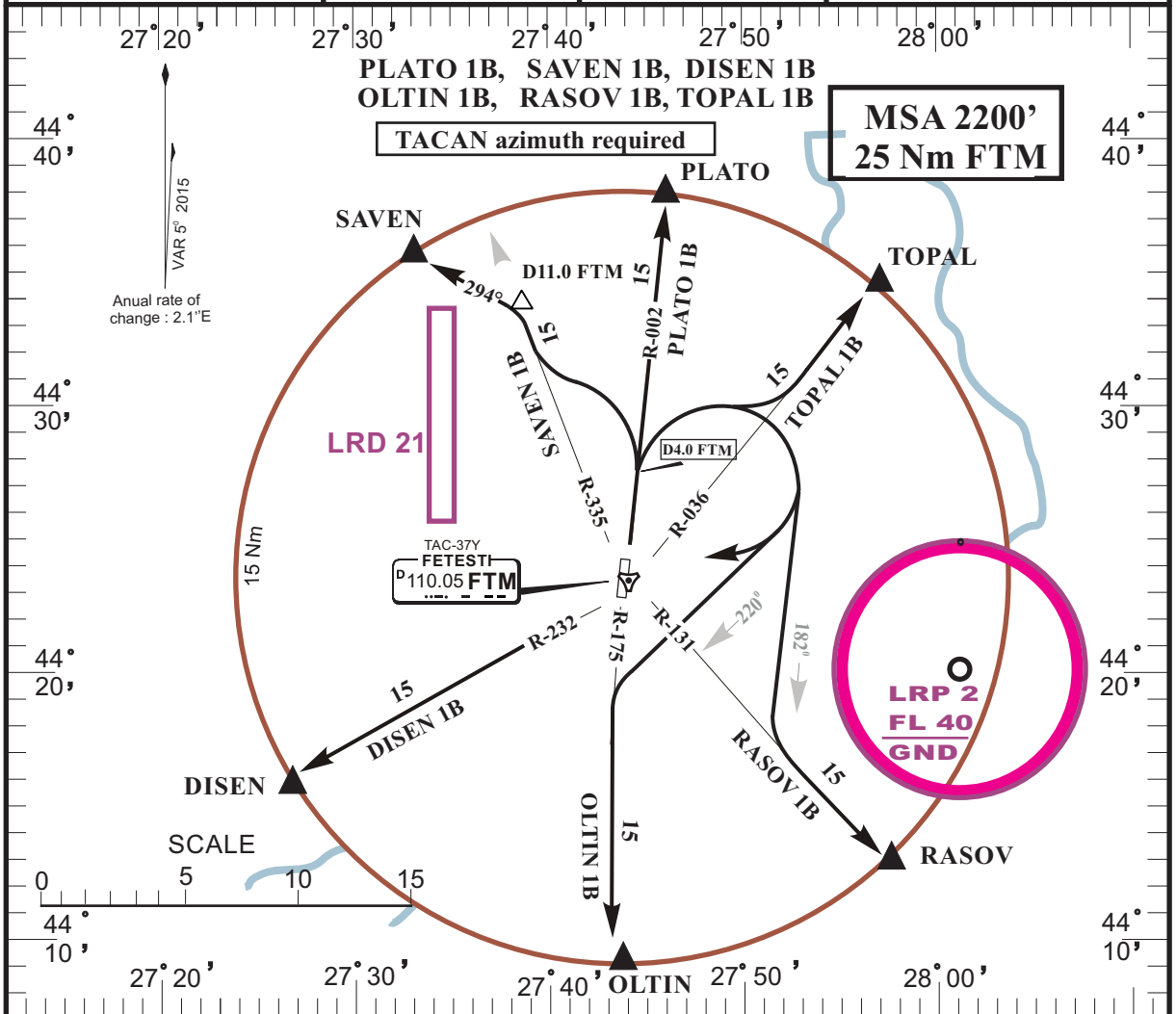


LRFT/FTM
BORCEA-FETESTI

FETEȘTI, ROMANIA
SID RWY 36

RUBIN INFO 130.800 /240.600ALT	RUBIN CONTROL 130.800	RUBIN APP 123.375 /309.625	RUBIN TWR/GND 119.325 /232.850	ATIS 122.525
TACAN FTM Chan 37Y	<i>Trans Altitude: 4000'</i> <i>Trans Level: by ATC</i>	Ad Elev 183'	LDA 8200' (2500 m)	



DEPARTURE ROUTE DESCRIPTION

NOTE: TACAN azimuth required. After take-off start turn at D 4.0 FTM.

PLATO 1B	After take-off climb on R-002 FTM to FL050 inbound PLATO .
SAVEN 1B	After take-off turn left climbing to FL050 to intercept R-335 FTM. At D 11.0 FTM turn left on track 294° direct to SAVEN .
DISEN 1B	After take-off turn right climbing to FL050 inbound FTM to intercept R-232 FTM inbound DISEN .
OLTIN 1B	After take-off turn right on track 220° climbing to FL050 to intercept R-175 FTM inbound OLTIN .
RASOV 1B	After take-off turn right on track 182° climbing to FL050 to intercept R-131 FTM inbound RASOV .
TOPAL 1B	After take-off turn right climbing to FL050 to intercept R-036 FTM inbound TOPAL .